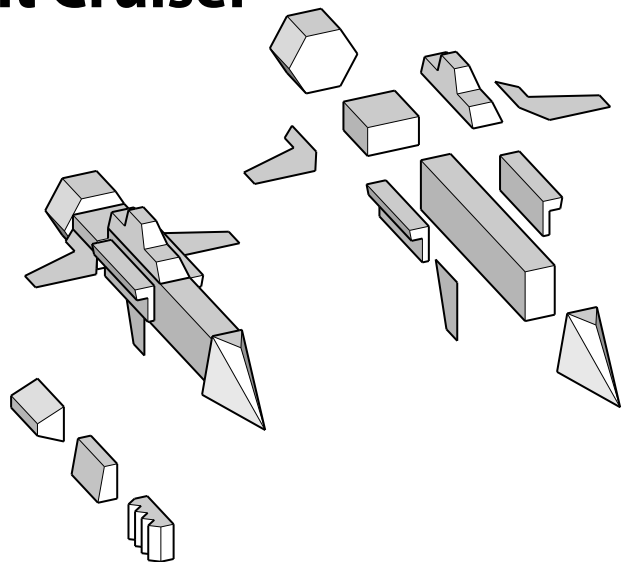




Imperial Space Light Cruiser

For Tabletop Wargames

Black & White with Details Version
Papermodel Copyright by Michael The Haggard
www.albionrising.com



THE BASE IS IN THREE PARTS. CUT THEM OUT AND GLUE TO THICK CARDBOARD: 0.5mm OR 1mm CARD STOCK WILL DO. CUT OUT THE CENTER HOLE IN TWO LAYERS... BIG ENOUGH TO FIT THE POST INTO. GLUE THEM TOGETHER AND STACK THEM ON THE THIRD, SOLID BASE.

