

4612 N. WOLCOTT



Century 21

SUSSEX & REILLY

A SMARTER APPROACH TO REAL ESTATE

THIS 4 BEDROOM, 3.5 BATHROOM LUXURY GREEN HOME FEATURES:



LUXURY FINISHES

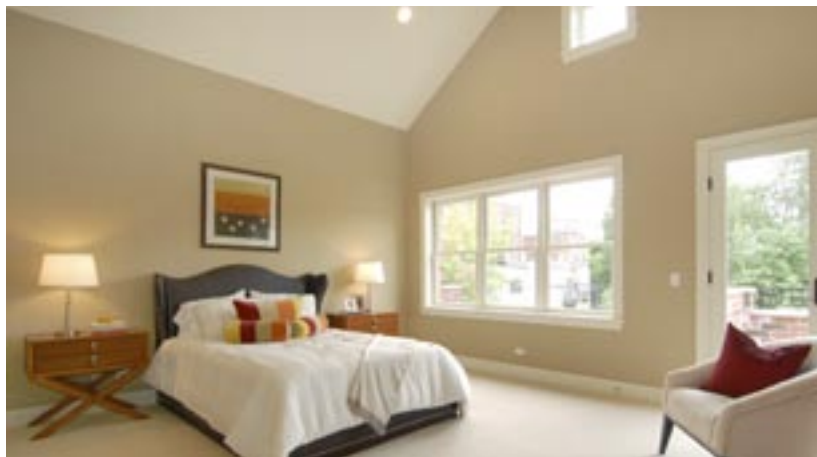
- 4,200 SQ. FEET OF LIVING SPACE ON 4 LEVELS
- BRICK & LIMESTONE HOUSE FEATURING LUXURIOUS & SUSTAINABLE LIVING
- INTERIORS BY JENNA WEDEMEYER DESIGN INC.
- OVERSIZED LOT (25' X 152.5') PROVIDING A 800+ SQ FT BACKYARD
- 3 CAR PARKING (2 CAR GARAGE + CARPORT)
- WALK-IN REAR ENTRY WITH CUSTOM STORAGE BENCH AND HOOKS
- CUSTOM CLOSETS THROUGHOUT
- HOT LINCOLN SQUARE AREA LOCATION
- CAT-5 (OR 6), RG6 DATA/VOICE CABLING AT PRE-SELECTED LOCATIONS THROUGHOUT, WIRED FOR SPEAKERS IN PRE-SELECTED LOCATIONS

EXTERIOR FEATURES

- BRICK GARAGE WITH BUILT-IN FIREPLACE
- PATIO AREA FOR ENTERTAINING
- ECO-FRIENDLY LANDSCAPING
- PERMEABLE MATERIALS FOR ALL WALKWAYS & PATIOS

MECHANICALS

- RHEEM 90 PLUS EFFICIENCY TWO STAGE, DUAL-ZONED FURNACES X2
- RHEEM 16 SEER CENTRAL AIR SYSTEMS X2
- HYDRONIC RADIANT HEATED FLOORS IN LOWER LEVEL
- PRE-PIPED FOR CENTRAL VACUUM SYSTEM
- RINNAI TANKLESS WATER HEATING SYSTEM



ECO-FRIENDLY FEATURES

- LOCALLY SOURCED BUILDING MATERIALS
- CHICAGO GREEN HOMES PROGRAM RATED
- ENERGY STAR CERTIFIED
- SOLAR PV ELECTRICAL & SOLAR THERMAL HOT WATER SYSTEMS
- GREENGRID MODULAR GREEN ROOF SYSTEM
- ALL ENERGY STAR COMPLIANT APPLIANCES
- HIGH-EFFICIENCY MECHANICAL SYSTEMS
- HIGH-EFFICIENCY WINDOWS & INSULATION
- LOW-VOC ADHESIVES & WALL COVERINGS
- RAPIDLY RENEWABLE & FSC CERTIFIED FLOOR COVERINGS
- RADIANT FLOOR HEATING SYSTEM
- TANKLESS HOT WATER SYSTEM
- DUAL FLUSH / LOW FLOW TOILETS
- JELD-WEN LOW-E ENERGY STAR QUALIFIED INSULATING GLASS WINDOWS
- 100% RECYCLED CONTENT CELLULOSE INSULATION
- USE OF RECYCLED MATERIALS FOR SOLID CORE DOORS AND CROWN/BASE TRIM MOULDINGS

This information is based upon the information provided to C21 Sussex & Reilly by the seller. We make no representations or warranties as to the information. This information is subject to possible errors, omissions, change of price prior to sale and withdrawal without notice.



Century 21

SUSSEX & REILLY

A SMARTER APPROACH TO REAL ESTATE



EXCLUSIVELY LISTED BY:

DAN SULLIVAN

773.226.7707 | dsullivan@srchicago.com | www.sussexandreilly.com