

# SLE

## Mcrary Field SALEM, OR

2.0 mi. SE of city. N44-54.57 W123-00.15 Mag Var: 17 deg E

### Nav aids:

Type:	ID:	Freq:	Radial:	Distance:
VOR	UBG	117.4	161	26.6
NDB	SL	266	309	4.3

### Approach Freqs:

Seattle Center 125.8

### WX Contacts:

ATIS 124.55; ASOS 503-371-1062;

### Traffic Patterns:

Light Aircraft 1210 MSL; Turbine Aircraft 1710 MSL;

### Obstructions:

waterfowl & flocks of geese in vcnty.

### Runways:

**13-31**; 5811X150; asphalt grooved; PCL; trees ry 31.

**16-34**; 5145X100; asphalt grooved; PCL; road ry 16; trees ry 34.

### Noise Abatement:

In efct; turbo jet & heli

### Communication Freqs:

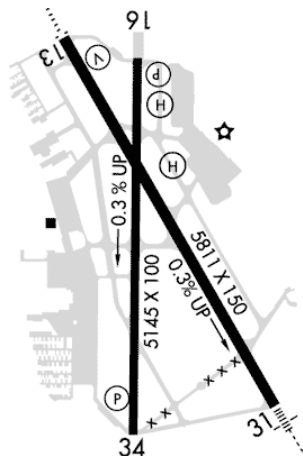
Unicom 122.95 TWR 119.1  
GND 121.9 CTAF 119.1  
FSS MC MINNVILLE 122.6

**Tower Hours:** 7 am to 9 pm

**Lights:** 9 pm to 7 am 119.1

Low - 7 clicks in 5 secs.  
Med - 5 clicks in 5 secs.  
Hi - 3 clicks in 5 secs.

### SLE Elevation: 214



**Phone:** 503-588-6314 Fax: 503-315-2550

**Fees:** Landing Fee; Ramp Fee; Parking Fee; Tiedown Fee;

**Charts:** SEATTLE; L1;

**Approaches:** ILS; LOC/DME; LOC BC; NDB; GPS RNAV;

**FSS:** MC MINNVILLE 866-833-7631

**Fuel:** 100LL; Jet;

**Special Operations:** Military Ops; Helicopter Ops;

### Notes:

CFR coverage provided for sked Part 121 acr only, excp w/PPR; ry 16-34 width rptd as 100 w/asph-grvd sfc. Intensive Flight Training.

### FBO Summary

**Salem Air Center** AOPA Credit Card: Earn Double Points Here;

Location: SW;

Frequencies: Unicom: 122.950;

Phone Number(s): 503-364-4158 800-369-4698 503-364-0111

**Val Avionics, Ltd.**

Location: W;

Phone Number(s): 503-370-9429

**Salem Aviation Fueling**

Fuel: Air BP-100LL; Air BP-Jet;

Location: SW; Hours:After hrs on request; 7 AM To 9 PM, Monday Thru Sunday;

Frequencies: Unicom: 122.950;

Phone Number(s): 503-364-4158 503-508-4178

**Graham Aviation Services, LLC**

Location: W; Hours:9 AM To 5 PM, Monday Thru Saturday;

Phone Number(s): 503-581-4139

**800-ALL-ATPS/Airline Transport Professionals-ATP**

Phone Number(s): 800-255-2877

