

PDX

Portland International PORTLAND, OR

4.0 mi. NE of city. N45-35.32 W122-35.85 Mag Var: 20 deg E

Nav aids:

Type:	ID:	Freq:	Radial:	Distance:
VOR	PDX	111.8	0	0
VOR	BTG	116.6	161	9.6
NDB	IA	332	277	6.4

Approach Freqs:

Portland 124.35

WX Contacts:

ATIS 128.35 503-493-7557; ASOS 503-284-6771;

Traffic Patterns:

Light Aircraft 1020 MSL; Heavy Aircraft 1520 MSL;

Obstructions:

large waterfowl in vcnty Sep thru April.

Runways:

10L-28R; 8000X150; asphalt grooved; HIRL; road ry 28R.

10R-28L; 11000X150; asphalt grooved; HIRL;

3-21; 7001X150; asphalt grooved; MIRL; road ry 21.

Right Traffic: 28R; 10R;

Noise Abatement:

Contact 460-4100

Communication Freqs:

Unicom 122.95 TWR 118.7

GND 121.9 DEP 133.0

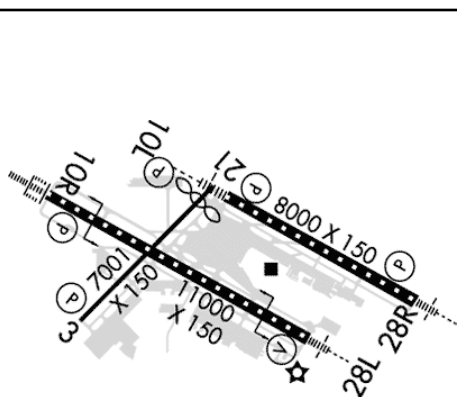
DEP 120.625 CLNC DEL 120.125

FSS MC MINNVILLE 122.6

Tower Hours: 24 hrs

Beacon: and IFR

PDX Elevation: 30



Phone: 503-460-4125 Fax: 503-460-4124

Fees: Landing Fee; Parking Fee;

Charts: SEATTLE; L1;

Approaches: ILS; LOC/DME; VOR; VOR/DME; NDB; Charted Visual; GPS RNAV;

FSS: MC MINNVILLE 866-833-7631

Fuel: 100LL; Jet; Jet-premix;

Special Operations: Helicopter Ops; Military Ops;

Notes:

Construction rptd; clsd to non-powered acft; Commercial acft opn & operators of acft w/FAA certified max gross Indg wt that exceeds 10,000 pnds are reqd to pay Indg fee. Airline Svc.

FBO Summary

Flightcraft, Inc. AOPA Credit Card: Earn Double Points Here;

Fuel: Air BP-100LL; Air BP-Jet; Air BP-Jet-premix;

Location: N; Hours:24 Hours;

Frequencies: Unicom: 122.950;

Phone Number(s): 503-331-4200

