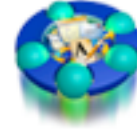
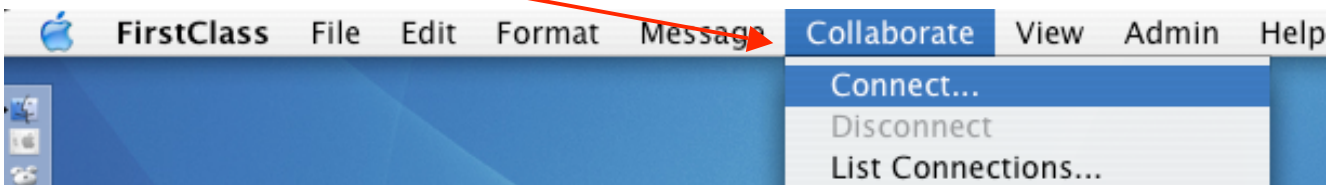


# Using Your First Class Email Account

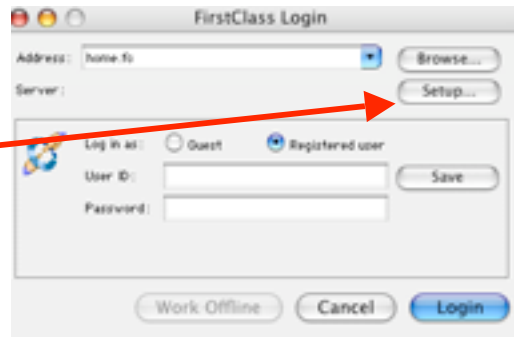
Are you clicking on your email icon and not seeing anything?



1. Click on your email icon in the Dock
2. If the log in screen **DOES NOT** appear ...Look at the at the menu bar at the top of the computer screen and click **Collaborate** and then **Connect**



3. The email login in screen will appear. Click the **Setup** button



4. In the **Server** box, type **fcmail.lovet.org**

5. Click **Save**

You will be all set to log in to your email from this point on.